



California / Nevada  
Community Action Partnership

California Department of  
Community Services and  
Development



INTERWEST  
INSURANCE SERVICES, INC.

# “Getting Ready”

## *Preparing Your Agency for Disaster Response*

Chip Arenchild, ARM, AAI, REA  
*Vice President, InterWest Insurance Services, Inc.*

September 25, 2007  
Sacramento, CA

# Learning Objectives



- Develop the knowledge, tools and strategies needed for your Agency's survival.
- Integration with your local emergency management plan.
- Goal-Create a take home workbook that will assist your agency in preparing for an emergency or disaster.



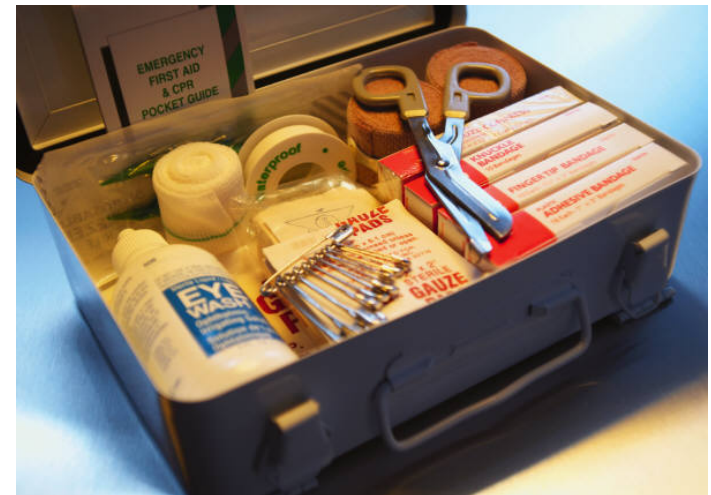
California Department  
of Community Services  
and Development



INTERWEST  
INSURANCE SERVICES, INC.

# Individual Preparedness

- Age, Education & Income Factors
  - Elderly
  - High School education
  - Household incomes < \$ 40,000
- Employment status, workplace knowledge.
  - Employed
  - Workplace Knowledge
- Workbook activity
  - Readiness Quotient



California Department  
of Community Services  
and Development



INTERWEST  
INSURANCE SERVICES, INC.

# OES Administrative Regions

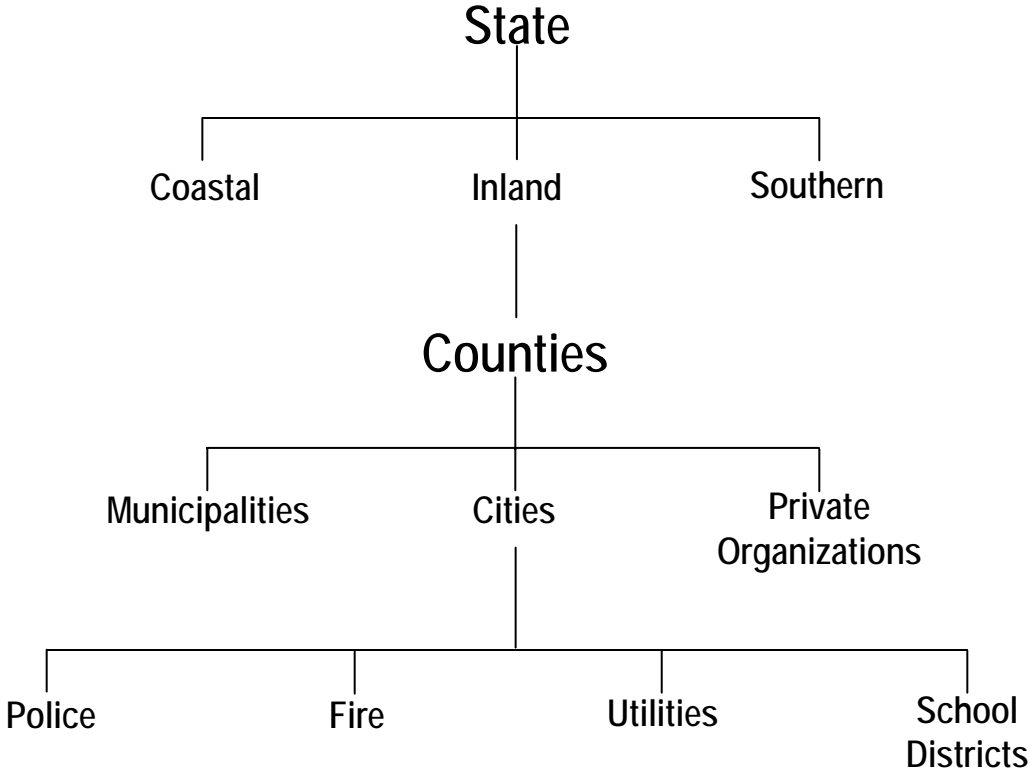


California Department  
of Community Services  
and Development



INTERWEST  
INSURANCE SERVICES, INC.

# Key Players



California Department  
of Community Services  
and Development



INTERWEST  
INSURANCE SERVICES, INC.

# Disaster Cycle



California Department  
of Community Services  
and Development



INTERWEST  
INSURANCE SERVICES, INC.

# Agency Survival

- Emergency vs. Disaster

- ✓ Local Fire
- ✓ Hazardous Materials
- ✓ Flash Flooding
- ✓ Pandemic
- ✓ Tornado
- ✓ Terrorism
- ✓ Riots
- ✓ Wild Fires
- ✓ Earthquakes
- ✓ Flood
- ✓ Pandemic
- ✓ Hurricane
- ✓ Terrorism



California / Nevada  
Community Action Partnership

California Department  
of Community Services  
and Development



INTERWEST  
INSURANCE SERVICES, INC.

# Disaster Cycle



- Potential Hazards Assessment



California Department  
of Community Services  
and Development



INTERWEST  
INSURANCE SERVICES, INC.

# Workbook Activity



- Potential Hazards Assessment
  - Vulnerability Analysis Chart



California Department  
of Community Services  
and Development



INTERWEST  
INSURANCE SERVICES, INC.

# Agency Survival Planning



- Establish a disaster preparedness team
  - Authority / Commitment
  - Schedule / Budget
- Analyze Hazards / Capabilities
- Develop a disaster plan
  - Written
- Implement Plan
  - Mitigate against disasters
  - Training
  - Review / Revise



California Department  
of Community Services  
and Development



INTERWEST  
INSURANCE SERVICES, INC.

# Agency Assets

- What services can your agency contribute to the local emergency plan?
  - How can they be used or modified for a disaster?
- Workbook Activity

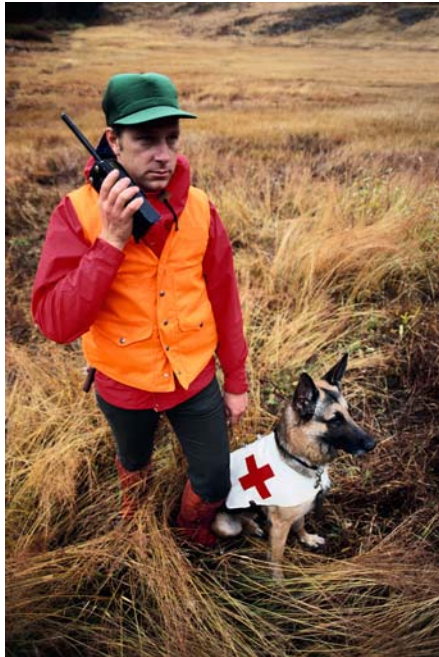


California Department  
of Community Services  
and Development



INTERWEST  
INSURANCE SERVICES, INC.

# Volunteer Issues



- **Volunteer:** *"someone who is willingly offers his/her services without expectation of financial compensation"*
- **Volunteer types:**
  - Spontaneous
  - Reserve
  - Ongoing
- **California Disaster Service Worker Volunteer Program (DSWVP):**
  - Register volunteers w/ accredited disaster council
  - Workers compensation benefits



California Department  
of Community Services  
and Development



INTERWEST  
INSURANCE SERVICES, INC.

# Agency Assets Assessment

## Asset Evaluation Workbook



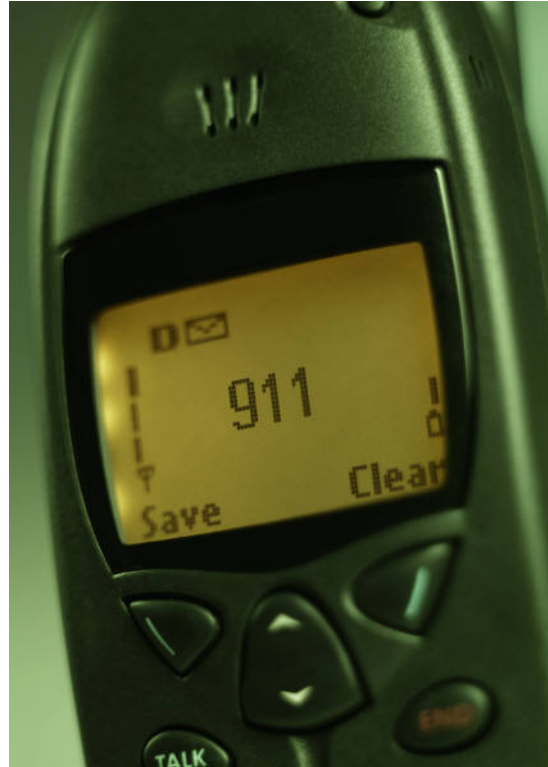
California / Nevada  
Community Action Partnership

California Department  
of Community Services  
and Development



INTERWEST  
INSURANCE SERVICES, INC.

# Emergency Declaration



- Local Declaration
- State Declaration
  - Governor
  - OES Director
- Federal
  - Presidential Order
- Reimbursement
  - Accounting Records
  - Discuss with local OES
  - Contracts



California Department  
of Community Services  
and Development



INTERWEST  
INSURANCE SERVICES, INC.

# How Do You Plug-In?

- Local Office of Emergency Services Coordination
- Citizen Corps Council
  - 35 County councils
  - 75 Local councils
  - 2 Tribal
- Business Survival Assessment



California Department  
of Community Services  
and Development



INTERWEST  
INSURANCE SERVICES, INC.

# Helpful Links

FEMA: [www.fema.gov](http://www.fema.gov)  
Ready: [www.ready.gov](http://www.ready.gov)  
CA OES: [www.oes.ca.org](http://www.oes.ca.org)  
Citizens Corps: [www.citizencorps.org](http://www.citizencorps.org)  
Red Cross: [www.redcross.org](http://www.redcross.org)



California Department  
of Community Services  
and Development



INTERWEST  
INSURANCE SERVICES, INC.

# Questions?

Chip Arenchild

[carenchild@iwins.com](mailto:carenchild@iwins.com)

530-895-1010

530-895-1313 Fax



California Department  
of Community Services  
and Development



INTERWEST  
INSURANCE SERVICES, INC.